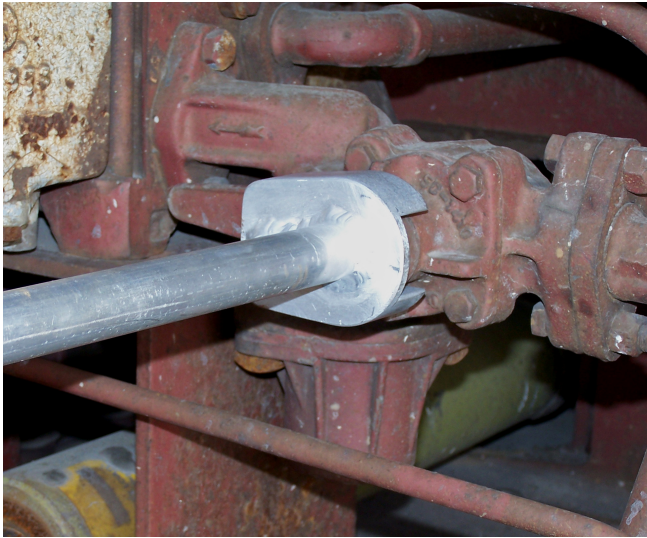
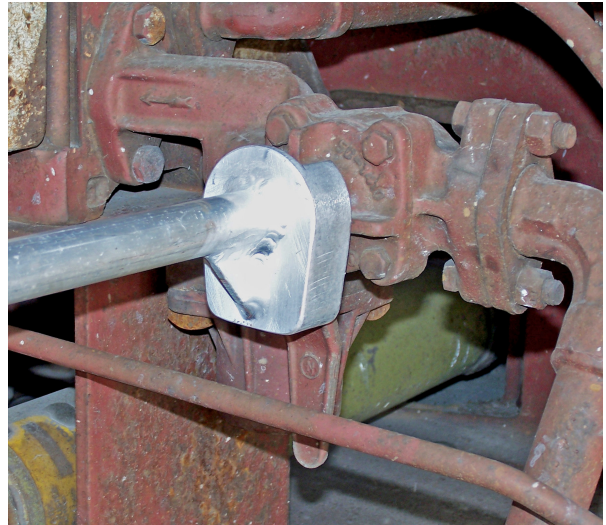


## **SUBJECT: ALUMINUM CUT-OUT VALVE HANDLE TOOL**



**FIGURE 1 – VALVE OPEN**



**FIGURE 2 – VALVE CLOSED**

### **TECHNICAL SPECIFICATIONS:**

Available Through:

Wulf's Custom Welding

19102 So. 156<sup>th</sup> Street

Springfield, NE 68059

Tel: 402-253-2772

Fax: 402-253-9092

Website: wcwrail.com

Reference Part Number: Aluminum Cut-Out Valve Handle Tool - 0438

Tool Weight: 2.5 Pounds

Base Construction Material: Aluminum Tubing

### **DESCRIPTION:**

**This tool is used to open and close the Cut-Out Valve Handles on valves located within the car body of certain types of freight cars.**

### **INSTRUCTIONS FOR USE:**

#### **ALUMINUM CUT-OUT VALVE HANDLE TOOL**

**WARNING:** Ensure car(s) is/are properly secured with hand brakes and/or chocks before attempting to perform any component repairs.

**WARNING:** Ensure Blue Flag protection is set in accordance with operating rule GSR 1300 before fouling any track or performing any type of repair work.

1. Inspect the tool for defects. Make sure the main tube is not bent, and the valve handle gripper is in good condition (Figure 1 & 2).



**FIGURE 3**

2. Place the tool gripper on the Cut-Out Valve Handle. Make sure the valve handle gripper is fully seated on the handle (Figure 1 & 2).
3. Close the valve by rotating the Valve Tool handle counter-clockwise. Rotate the Valve Tool handle clockwise to open the valve (Figure 3).
4. When repairs are completed, check the tool for defects and place it back into its normal place of storage.

**ERGONOMIC/SAFETY ADVANTAGES:**

- Provides a method of opening and closing the Cut-Out Valve Handle from outside of the car body.
- Allows the mechanic to open or close the Cut-Out Valve without having to climb into the end of the car.

**SAFETY PRECAUTIONS:**

WARNINGS: Noncompliance could cause injury to employees

CAUTIONS: Noncompliance could cause damage to equipment

NOTES: Pertinent information

1. WARNING: Wear personal protective equipment in accordance with Safety and General Conduct Rule 1040 as required.
2. CAUTION: Make sure the valve tool is firmly seated on the valve handle before attempting to turn the valve handle.