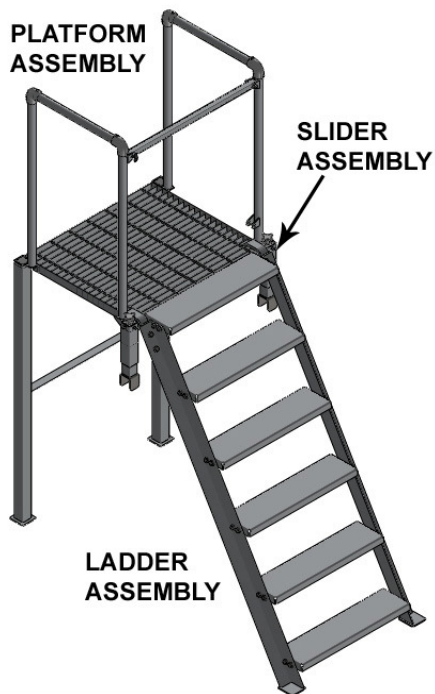
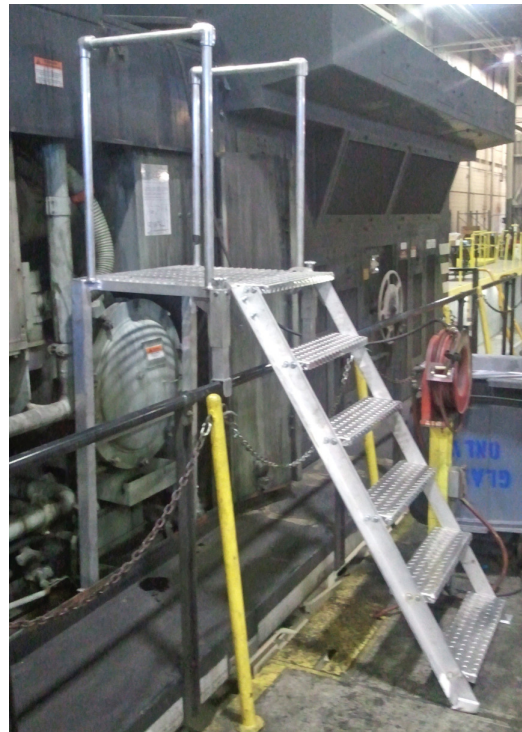


## **SUBJECT: LOCOMOTIVE SIDE WORK PLATFORM**

Capacity: The rated capacity of this platform is 500 pounds.



**FIGURE 1**



**FIGURE 2**

### **TECHNICAL SPECIFICATIONS:**

Available Through:

Wulf's Custom Welding  
19102 So. 156<sup>th</sup> Street  
Springfield, NE 68059  
Tel: 402-253-2772  
Fax: 402-253-9092  
Website: wcvrail.com

Reference Part No: Locomotive Side Work Platform - 0384

Platform Weight: Complete Assembly With Platform & Ladder – 74 Pounds  
Platform Assembly Alone – 42 Pounds  
Ladder Assembly Alone – 32 Pounds

Base Construction Material: Aluminum Ladder And Platform.

### **DESCRIPTION:**

**This platform system is designed to provide access to locomotive car bodies from elevated ramps. It mounts on the locomotive car body and hand rail.**

### **INSTRUCTIONS FOR USE:**

#### **LOCOMOTIVE SIDE WORK PLATFORM**

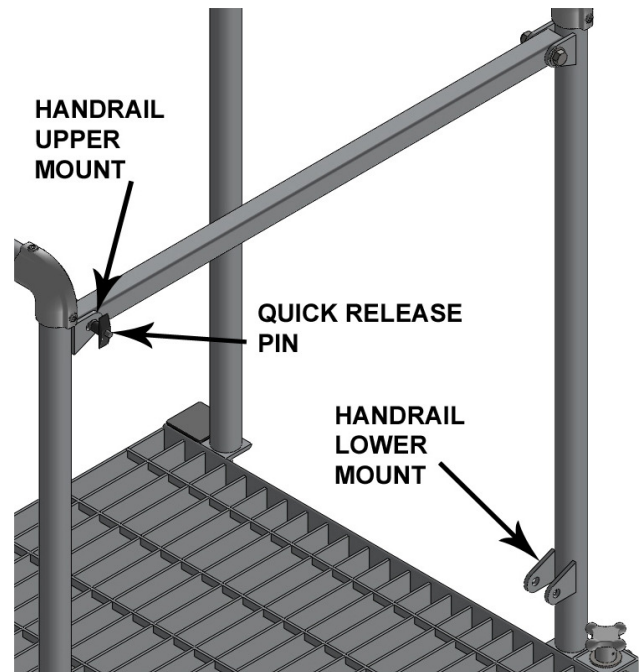
**WARNING:** Ensure locomotive(s) is/are properly secured with hand brakes and/or chocks before attempting to perform any component repairs.

**WARNING:** Ensure Blue Flag protection is set in accordance with operating rule GSR 1300 before fouling any track or performing any type of repair work.

1. Inspect the platform and ladder assemblies prior to use. All the fasteners for both systems must be in place and tight. Make sure the stationary and moveable handrails are in place, and the moveable handrail is functioning properly (Figure 1).
2. Clean any oil, grease, dirt, or other debris off the grating and steps before use.
3. Move the platform assembly to the required location for locomotive car body access (Figure 2).
4. Place the platform assembly on the locomotive. Make sure the platform feet are firmly seated on the floor of the car body, and the slider assemblies are on the locomotive handrail (Figure 2).
5. Adjust the sliders as necessary so the platform surface is as close to level as possible. Turn the slider adjustment knob clockwise to lower the slider, and counter-clockwise to raise it (Figure 1).
6. Place the ladder assembly into position on the platform by inserting the mounting angles into the platform grating. Make sure the angles are fully seated in the grating (Figure 3).



**FIGURE 3**



**FIGURE 4**

7. Remove the quick-release pin from the lower moveable handrail mount while standing on the ramp. Use the ladder to climb up to the platform, using the handrails for support (Figure 4).
8. When you are in position on the platform, place the moveable hand rail in the upper handrail mount and install the quick-release pin (Figure 4).
9. When repairs have been completed, remove the moveable handle quick-release pin, and allow the moveable handrail to drop to the lowered position (Figure 4).

10. Climb down the ladder, using the handrails for support. Install the quick-release pin, securing the moveable handrail in the lower handrail mount (Figure 4).
11. Remove the ladder and the platform from the locomotive and place them into their normal place of storage. Clean any dirt, oil, grease, or other debris off the steps and grating.

**ERGONOMIC/SAFETY ADVANTAGES:**

- The platform provides a stable platform to access components in the locomotive car body to complete repairs.
- Meets requirements for fall protection while performing repairs. .

**SAFETY PRECAUTIONS:**

WARNINGS: Noncompliance could cause injury to employees

CAUTIONS: Noncompliance could cause damage to equipment

NOTES: Pertinent information

1. WARNING: Wear personal protective equipment in accordance with Safety and General Conduct Rule 1040 as required.
2. WARNING: Follow all Safety and General Conduct rules regarding the use of ladders and platforms.
3. CAUTION: Use the handrails when climbing the ladder to enter or leave the platform area.
4. CAUTION: Use the sliders to adjust the platform as close to level as possible before use.
5. CAUTION: Make sure the moveable hand rail is in place and secured with the quick-release pin after you have entered the platform.
6. CAUTION: Make sure the ladder angles are securely mounted in the platform grating.